

# The Tapscott Learning Trust Annual Report

# 2024/25



Congratulated for 'the excellent outcomes the disadvantaged pupils achieved at the end of the 2024/25 academic year.'

BRIDGET PHILLIPSON  
SECRETARY OF STATE FOR EDUCATION



## Outstanding Provision Through....

- ✓ Diversity and Inclusion for all
- ✓ IQM Quality Marks - Centre of Excellence or Flagship Status in all schools
- ✓ Leading on Multilingualism throughout the UK
- ✓ A YST Beacon Well School Trust - improving education outcomes by supporting the health and happiness of school staff and pupils across the UK
- ✓ Expert RE, RSHE and PSHE support from leading expert, Claire Clinton
- ✓ Supporting schools and children throughout the country via our Training Hub
- ✓ Successful ECT Programme - training the next generation of teachers
- ✓ High quality assured delivery of National Professional Qualifications
- ✓ Delivering successful School Improvement Support
- ✓ Recognised robust governance structures
- ✓ Ofsted – all schools graded Outstanding and Good
- ✓ 95% staff retention
- ✓ High quality sports provision and competitions, supporting our pupils and 9 other schools within Newham

Some highlights of 2024/25



Children across our schools took part in the London Mini Marathon

Jordan Riches running the London Marathon on behalf of the trust

Trustwide Wellness Inset Day attended by over 300 members of our staff who came together to share experiences and expertise

Our unique TTLT Awards celebrating our children and communities



Don't just take our word for it... listen to what our parents and children say...

Scan Here



# JOINT WELCOME FROM OUR CEO AND CHAIR OF TRUSTEES

4 Schools

2,106 pupils

316 members of staff

80 Languages spoken

We are delighted to present our 8th stakeholder report for the 2024/25 academic year in which we celebrate the amazing work across the trust and its schools.

Our schools are fully inclusive and celebrate everyone; our children, our staff and our communities.

There have been many achievements throughout the year and this report only gives a fraction of these.

We are very proud of our provision which ensures that our children are supported and that we continue to develop the whole child. We consider ourselves incredibly lucky to work with a diverse community which really allows us to develop a greater understanding of each other which, we believe in turn, helps us to foster respect and acceptance.

We would like to thank our amazing staff teams and our trustees, members and governors for their hard work, dedication and commitment. Another huge thank you must rightly go to our parents and carers who we work together with to achieve for all. We would particularly like to thank our children for their inspiration and their respect for each other which ensures that they are active participants in wanting to improve, not only their own lives but also the wider community, celebrating our differences and working together.

With very best wishes,

Paul Harris

CEO

Paula Jeffers

CHAIR OF TRUSTEES



We do have spaces in some of our schools. If you are interested in enrolling your child please contact your school of choice directly to arrange a visit or email [info@ttl.academy](mailto:info@ttl.academy)



# MULTILINGUALISM

At TTLT we believe that promoting a multilingual approach provides schools with an asset based approach to languages and puts languages at the forefront of education. Believing that all languages have a place in education will create a space that is linguistically and culturally inclusive for all.

Managing the smooth admission for children with EAL and establishing effective provision for them is a key priority for us and within the trust this area is led by Soofia Amin who has worked in this field for the past 20 years.

Soofia is passionate about developing excellent practice for multilingual pupils whilst promoting their first languages as a resource in the classroom and the wider school. She has a wealth of experience in primary, secondary and further education delivering training and advising schools on supporting multilingual pupils and their families. Her work was recognised by the EAL Academy in 2020 through the EAL Quality Mark gold award

As part of our Training Hub, we offer training on various strategies needed to develop a whole school approach to multilingualism, as well as being able to provide support and guidance to schools on this.

We offer a range of services to support schools in delivering excellent EAL/Multilingualism provision. We also offer bespoke support in a variety of areas including INSET days, staff meetings, 1:1 support and support for EAL leads.

*The pioneering work of educational professionals, such as that conducted at Kensington Primary School in London, should serve as a model of multilingual pedagogy from an early age. Promoting multilingualism in language education contributes to preserving linguistic and cultural diversity. It acknowledges and values the richness of different languages and cultures, promoting inclusivity and creating a more equitable educational environment and a more inclusive, tolerant, and prosperous world.*

UNIVERSITY COLLEGE LONDON

*It was interactive and interesting learning about different ways of looking at languages. Amazing Lesson!*

SCITTELS FEEDBACK 2025



Soofia Amin



*The expertise provided by Soofia Amin not only equipped our trainee teachers with essential linguistic and cultural competencies but also empowered them to embrace the diverse linguistic assets of their pupils. The impact of this training was evident in the engagement and progress of our students.*

ALPHA TEACHING SCHOOL HUB



# GOVERNANCE

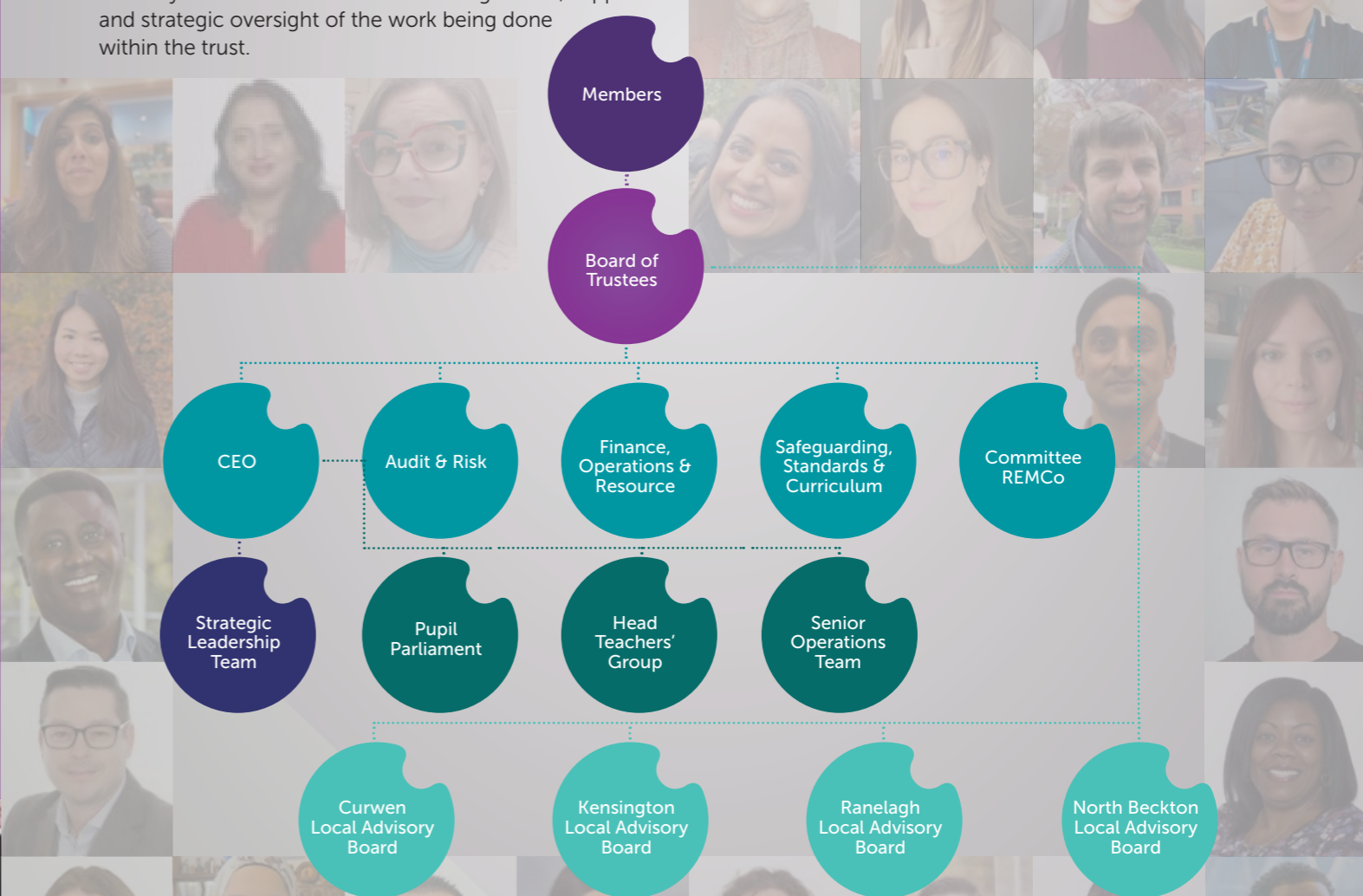
Our Members, Trustees and Governors are recruited for their experience in all aspects of life in order to support us with our work and, we believe, they reflect the diversity of the communities that we are lucky to work with.

The trust recently took part in an external review of governance which found that our systems are robust.

**Our Members** oversee the work of the Board of Trustees to ensure that we are delivering and adhering to our agreed mission, vision and aims. Our trustees are responsible for the strategic leadership of the Trust, ensuring that it adheres to our agreed mission, vision and aims as well as being accountable for driving educational standards and financial good health. Our Local Advisory Boards (LABS) oversee the running of their school in terms of the curriculum, safeguarding and the budget, ensuring that the school's leadership team is held to account for academic performance, high quality education, and quality of care.

**Trustees** delegate some of their responsibilities to the sub-committees. Our Chair of Trustees, Paula Jeffers meets monthly with our CEO and CFO offering advice, support and strategic oversight of the work being done within the trust.

|   |  |                                      |
|---|--|--------------------------------------|
| <b>100%</b><br>Governance positions filled    | <b>50</b><br>Number of Governors, Trustees and Members | <b>37</b><br>Meetings held this year |
| <b>88%</b><br>Meeting attendance Trust Board  | <b>88%</b><br>Meeting attendance LABS                  | <b>6</b><br>Training sessions held   |
| <b>7</b><br>New to TTLT Governance Inductions |  |                                      |



# WORKING IN PARTNERSHIP

*Forging forces to give children the best start in life*

The trust works in partnership with Rebecca Cheetham Nursery offering support in a range of areas such as ICT, H&S, governance and compliance, CPD and SEND. The nursery offers both government funded and flexible paid extended day places to children aged 2, 3 and 4 years old. The accompanying children's centre offers a range of different activities for families in the community.

- Preparing children to be 'Reception Ready'
- A broad and balanced curriculum
- Learning both indoors and outdoors
- Stay and Play SEND Sessions
- Forest School

## Other Partnership Work includes...

During 2024/245 the trust also successfully supported other schools in their development and these include schools in the London Borough of Newham, other London boroughs as well as further afield in the East and South East of England.

As well as partnering with individual schools, we also work closely with a range of associates including Newham Council, the Department of Education, the Confederation of School Trusts and the Youth Sport Trust.



Rebecca Cheetham Nursery & Children's Centre, Marcus Street, Stratford, London E15 3JT

Head Teacher  
**Rohan Allen**



"The school has designed an ambitious and well-sequenced curriculum to build secure knowledge and skills from the beginning of the provision for two-year-old children."

LPPA

improving parental engagement



*Our experience with the nursery is excellent. Our child loves it there. She is having fun, making friends and learning a lot. We have a great relationship with all the staff*



# SPORTS HUB SUCCESS

Our Sports Hub was created to provide opportunities for children to learn, collaborate and compete through school sport as well as to provide high quality support and CPD to empower all staff to deliver outstanding PE lessons.

## Our Partners

The Sports Hub partners with a number of organisations to ensure that our pupils' experience of PE, School Sport and Physical Activity is second to none. From the Royal Ballet and Opera to MLB Baseball, Panathlon to the Premier League, our offer is inclusive and varied. Last year we worked closely with the London Marathon Trust and saw all our pupils take part in a virtual mini marathon with 160 lucky pupils completing the TCS London Mini Marathon.

The Youth Sport Trust's Well Schools is a movement of over 2,000 schools and trusts taking positive action to improve education outcomes by supporting the health and happiness of their staff and pupils across the UK.

We are proud to be recognised by YST as a 'Beacon Well School Trust' and are the only trust nationally to be recognised for the work we do to support staff and student wellbeing.

The Sports Hub has capacity for new schools to join, please contact [info@ttl.academy](mailto:info@ttl.academy)



TTL's Sports Hub delivers bespoke support ensuring that schools offer high quality Physical Education PE, School Sport SS and Physical Activity PE (PESSPA) lessons.

**19** Competitions/Festivals  
**2803** children took part  
**13** schools participated



**Paul Belcher**  
SPORTS HUB DIRECTOR

## MEDAL TABLE

| SCHOOL            | 🥇 | 🥈 | 🥉 |
|-------------------|---|---|---|
| 1 Kaizen          | 9 | 6 | 3 |
| 2 Curwen          | 9 | 3 | 1 |
| 3 Selwyn          | 6 | 6 | 4 |
| 4 Gainsborough    | 5 | 6 | 3 |
| 5 Carpenters      | 5 | 2 | 1 |
| 6 Ellen Wilkinson | 4 | 4 | 3 |
| 7 Kensington      | 3 | 4 | 8 |
| 8 North Beckton   | 3 | 4 | 5 |
| 9 Ranelagh        | 2 | 4 | 5 |
| 10 Park           | 1 | 1 | 3 |
| 11 Sir John Heron | 0 | 1 | 2 |
| 12 Earlam         | 0 | 1 | 1 |
| 13 Eko Pathways   | 0 | 0 | 1 |



# We All Belong

## HIGHLIGHTS

- Reaccreditation of IQM Centre of Excellence
- Our Resource Provision - Children with SEND are educated within mainstream classes and benefit from personalised timetables that include tailored interventions to address their individual needs
- Our EYFS continues to be a real strength - Ofsted 'Good with Outstanding EYFS'
- Our Forest School, offering outdoor learning opportunities for all children
- Pupils took part in the London Mini Marathon
- A wide range of after-school clubs on offer to reflect the interests and talents of our pupils
- TTLT Cricket Champions
- Family support offered through regular Stay & Play sessions



**North Beckton**  
PRIMARY SCHOOL

North Beckton Primary School,  
Harrier Way,  
Beckton,  
London, E6 5XG

Executive Head Teacher  
**Sheila Lawrenson**  
Head of School  
**Bal Kettery**

## AWARDS & ACHIEVEMENTS



## OUR WELL SCHOOLS PROGRAMME

- 'Time for Curriculum' weekly lessons
- Educational Mental Health Sessions
- North Beckton Cycling Programme
- Mindfulness after school club
- Year 6 and SEND Swimming

## TTLT WRAP AROUND CARE

- Breakfast Club 7:30-8:40am
- 20 after school clubs
- Daily 6 O Clock Club

**Ofsted**  
Good Provider  
"The school prioritises making sure that pupils learn and achieve successfully - Leaders have made sure that there is an ambitious curriculum in all subjects"



**93%**  
of children say they feel safe at school

**98%**  
of parents would recommend the school

**97%**  
of parents say their child is happy

**98%**  
of parents believe that there is an excellent school/parent relationship



# EQUALITY, DIVERSITY AND INCLUSION

As a trust we are extremely proud of our commitment to meeting the needs of everyone and ensuring that everyone is given opportunities to achieve their full potential.

Our schools hold a variety of inclusion quality marks and awards and TTLT provides regular training for staff including the Autism Education Trust Work-based CPD and Team Teach courses which are nationally recognised and supported by the Department of Education. The schools within the trust receive support with SEND from a central team and through participation in peer support meetings.

During the year the trust reviewed its vision, values and aims and identified health and happiness as its key focus. As in previous years, we ensured that we listened to our staff via the annual survey and also provided them with a 'You Said We Did' communication to all staff.

Working within the trust is an expert group of SENCo's who work together to ensure the best provision for all children. In addition, one member of our staff, Alice Thomas, works across the trust as a Specialist Teacher Assessor assessing children's learning needs. She is an associate member of the British Dyslexia Association and a member of the Professional Association of Specialist Teachers working closely with the Local Authority and the NHS.

**8.8%**  
of children with a EHCP

**10.9%**  
of children receiving SEN Support

**19.7%**  
of children with SEND

**72%**  
of staff believe that TTLT provides a flexible working environment, including offering flexible working



Alice Thomas



|           | National Data 2024<br>Mainstream Primary Schools | TTLT<br>2024 |
|-----------|--|--------------|
| EHCP      | 5.3%   | 8.8%         |
| SENS      | 10.9%  | 10.9%        |
| Total SEN | 19.5%  | 19.7%        |

**Helen Harris**  
EQUALITY, DIVERSITY AND INCLUSION OFFICER





The Tapscott Learning Trust Awards are a celebration of our wonderful students, staff and community and take place annually in July.

A huge thanks to all of our sponsors for supporting us with our annual TTLT Awards.



**SCAN HERE**  
to watch the awards,  
or visit...

<https://youtu.be/JcuPoYEdMdA>



**Outstanding Contribution to School Life in Key Stage 2**

Manahil Tauseef,  
Kensington Primary School

**Outstanding Contribution to School Life in Key Stage 1**

Joint Winners Airabella Gaza,  
North Beckton Primary School  
& Ezra Light, Rebecca  
Cheetham Nursery

**Creativity Award**

Anastasia Zyluk,  
Ranelagh Primary School

**Young Achiever Award**

Hassan Arfat,  
Kensington Primary School

**Outstanding Educational Achievement in Key Stage 2**

Selena He,  
Curwen Primary School

**Outstanding Educational Achievement in Key Stage 1**

Adrija Vaiciulienė,  
North Beckton Primary School

**Outstanding Educational Achievement in EYFS**

Joint Winners Hasan Ali,  
Ranelagh Primary School  
& Enze Guan, Rebecca  
Cheetham Nursery

**Sport Achievement Award**

Nur Omer,  
North Beckton Primary School

**Unsung Hero Award**

Ms. Iara Madureira, Parent Volunteer  
at Curwen Primary School

**Staff Member of the Year**

Mr. Taz Mansuria

**External Provider Award**

Ms. Alice Thomas

**Lifetime Achievement Award**

Ms. Maggie Cameron-Ratchford

**Sports Hub Winners of the Year**

Kaizen Primary School



# A place everyone loves to be

## HIGHLIGHTS

- Reaccreditation of IQM Flagship Status
- The school has been a major influencer in the subject of multilingualism, contributing to local, regional, national and international development
- Ben Levinson OBE named Campbell Network Leader of the Year at the 2025 YST Awards
- The school has supported 35 schools in the Ipswich area to improve attendance and wellbeing
- TTLT Girls Tag Rugby, Boys Football and Girls Baseball Champions
- Pupils took part in the London Mini Marathon
- Our PTA went from strength-to-strength, leading on a range of events
- Family support offered through regular Stay & Play sessions

## AWARDS & ACHIEVEMENTS



School Games Platinum



Language Friendly School (retained)



IQM Flagship Status



Youth Sport Trust Gold



Newham School of Sanctuary

## OUR WELL SCHOOLS PROGRAMME

- Emotional Health Programme
- 'Work Out Wednesdays'
- Intra Sports Week - 3 times a year
- Active Learning Breaks throughout the day
- 3 half hour fitness and 1 hour skills for life sessions per week per class

## TTLT WRAP AROUND CARE

- Breakfast Club 7:30-8:30am
- 40 after school clubs
- Daily 6 O Clock Club

**98%** of parents say their child is happy at school

**86%** of pupils say they are now fitter, faster, and stronger

**93%** of children say they feel safe at school

**98%** of parents believe that there is an excellent school/parent relationship

Kensington Primary School,  
Kensington Avenue,  
Manor Park,  
London,  
E12 6NN

Executive Head Teacher  
**Ben Levinson OBE**

Head of School  
**Moji Omole**



"Leaders have a strong vision for the school: that it is a place where everyone loves to be"



# RE, RSHE AND PSHE

The Tapscott Learning Trust are proud to be working alongside ..... **Claire Clinton and her team.** Claire, an advisory teacher for over 20 years working with multiple authorities, is at present Director of RE and RSHE in Newham.



## Religious Education Support

**128** teachers **43** Primary Schools (65%) **8** Secondary Schools (40%)

We ran many courses for both the primary and secondary networks, a collective workshop course, new to leading in RE and termly tours of places of worship for teachers.

This year's Secondary Interfaith Project took the form of a roadshow with over **500 students** attending and we also produced a 'My Community and Me' Toolkit.

- **5 sessions** with different Newham school based providers of primary and secondary training)
- **7 schools** supported with twilight/inset sessions
- **168 children** attended Primary interfaith RE conferences
- **100% of teachers** attending network meetings said they were excellent



"Touring the religious places of worship with someone who had so much knowledge and great connections with other faith leaders was excellent."

"Meeting other RE leads and networking with colleagues in the same boat as me"

"It has made me really think about how I will be planning and teaching my lessons."

"This day has made me more excited to teach RE"

## PSHE

**43** teachers received training **35** Primary & Primary Schools were involved **3** schools received bespoke support **100%** of teachers attending network meetings said they were very good or excellent

## School Council

We provided a termly school council network meeting for schools in Newham with content including; aims and policies, impact evidence, climate change and ecology.l. **27** schools received training **288** children attended school council conferences **100%** of all those attended would recommend to other schools and teacher

## Pupil Parliament

**20** schools attended events **50** students took part **100%** agreed or strongly agreed that "The event was engaging and exciting for pupils" **96%** of teachers would recommend this event to other schools and teachers



# Together Everyone Achieves More

## HIGHLIGHTS

- Reaccreditation of IQM Flagship Status  
*'Curwen is an outward facing school. It teaches its children to care for each other as well as people in their community, whilst looking out to the rest of the world. Children are lucky to attend this school'*
- 48 Pupils took part in the London Mini Marathon
- 45 Children performed in the Festival of Voices at the Hackney Empire
- Hosting colleagues the Santa Clara School in Spain and cementing our links
- TFLT Champions in Girls Footfall, Basketball, Swimming, Boys Football and Mixed Cricket
- Children performed at the Shakespeare's Schools Festival
- 3rd Place in the Big Walk and Wheel Challenge, encouraging children to cycle or walk to school



**CPS**  
**CURWEN PRIMARY SCHOOL**

Curwen Primary School,  
Atlas Road,  
Plaistow,  
London,  
E13 0AG

Executive Head Teacher  
**Paul Harris**  
Head of School  
**Kate Mansfield**

## AWARDS & ACHIEVEMENTS

## OUR WELL SCHOOLS PROGRAMME

- A wide variety of extended provision to ensure children have opportunities before, during and after the school day
- Student Leaders promoted to develop Curwen Core Skills
- Involving our families through Sports Days and our Family Bike Club
- A Comprehensive PSHE curriculum to support pupils

## TFLT WRAP AROUND CARE

- Breakfast Club 7:45-8:45 am
- 66 after school clubs - 82% of children attended at least one
- Daily 6 O Clock Club



"Leaders have designed an aspirational curriculum that goes beyond the expectations of the national curriculum in every subject."

**94%**  
of children say they feel safe at school

**96%**  
of parents say their child is happy

**95%**  
of parents would recommend this school

**95%**  
of parents believe that there is an excellent school/parent relationship



# ESTATES, BUILDINGS AND OPERATIONS

The trust continued to invest in developing its Estates & Operations Team which has resulted in direct savings to the trust and its schools, reflecting our ongoing commitment to providing high-quality, safe, and inspiring learning environments for all pupils.

Through the dedicated work of the Estates and Operations Management Team, the Trust has successfully secured substantial external funding to enhance our school buildings. This year, improvements have been largely focused on strengthening site security and North Beckton and Kensington Primary Schools have benefited from a wide range of security upgrades, including new access control systems, improved CCTV coverage, upgraded external lighting, new fencing, and replacement external doors.

All trust schools have also received funding from the London Borough of Newham to address surface water flooding and further targeted investment has been made at Ranelagh Primary School, where London Borough of Newham funding has enabled significant enhancements to SEND provision. Improvements to classroom spaces, alongside upgraded outdoor and indoor provision.



## Digital Technology and Computing

The trust has continued to develop ICT across the schools in recognition of the DEF's Digital and Technological Standards. All schools now benefit from modern infrastructure that enables effective digital platforms for both learning and operational purposes, supporting staff workload reduction. The trust has established comprehensive safeguarding systems, including appropriate IT security measures, with systems increasingly migrating to cloud-based solutions. These are actively monitored to keep children safe online, and cyber security protocols have been further developed with response plans in place.

Across the trust, schools are successfully embedding a high-quality computing curriculum that builds pupils' digital skills progressively. Ranelagh, North Beckton and Kensington are delivering the NCCE's Teach Computing curriculum and all schools maintain a strong commitment to online safety education, with relevant topics integrated across the curriculum with all participating actively in Internet Safety Day.

The trust recognises the importance of partnership with families and engages proactively with parents and carers, providing guidance on supporting children to stay safe online at home.

- £150k ICT
- £150k School Building Upgrades
- £10k Environment Upgrades
- £80k Security

## Health and Safety and Risk Management

The trust maintains a strong and proactive approach to health and safety, supported by close collaboration with an external specialist consultant. Annual risk assessments continue to demonstrate year-on-year improvement across all schools, reflecting the trust's robust systems and clear commitment to safeguarding.



# FINANCIAL OVERVIEW 2024-25

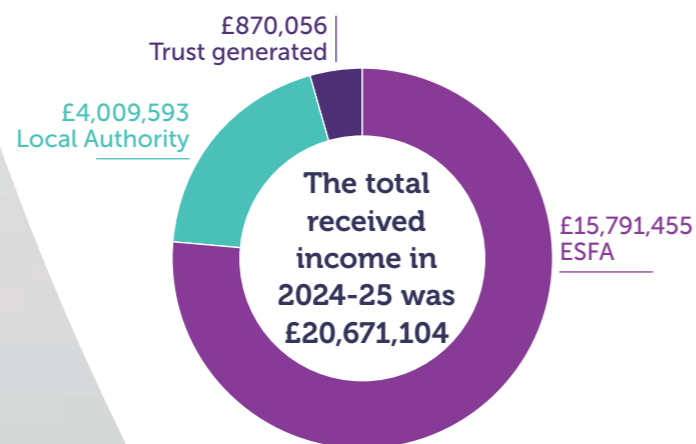
## Finance Summary

An extremely challenging year saw the trust navigate through and overcome a range of difficult and demanding situations mainly due to the continued lack of core funding not matching the needs of our pupils. Together with falling rolls, which is a trend across the local geographic area, this year continued to raise further challenges driven by increased financial pressures leading to some tough decisions across the board.

With this in mind, and the ever growing pressures on budgets, we are happy to report another successful year for the trust which saw us achieving our operational targets and outcomes whilst providing our children with an amazing education in a thriving environment. With a net in year surplus of just under £122k, is an outstanding achievement given the situation.

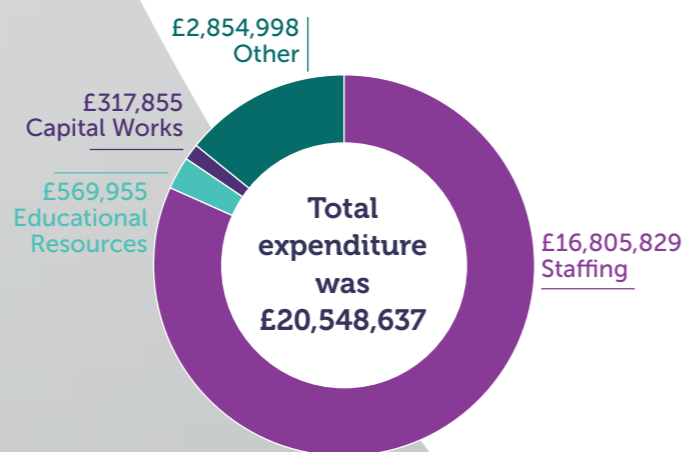
## FUNDING INCOME

Funding for schools is predominantly received from the DfE/ESFA (Department for Education/Employment and Skills Funding Agency) as restricted funds. Other funding is from the Local Authority, and the remaining income is a combination of smaller grants and trading income.



## EXPENDITURE

As is usual, the largest part of the funding was spent on staff salaries with teacher's salaries accounting for 50% and support staff 30% respectively. Other expenditure includes wider spend on key areas such as Estates Management, Technology including ICT, Teaching Resources and legislative costs.



## CAPITAL WORKS

The trust has completed building works following successful capital grant bids of over £200k including grants from the Crime Resilience Programme. Over **£100k** of contributions from the trust towards these projects has ensured that our estates remain solid and provide a safe environment for our pupils and staff.



**Taz Mansuria**

CHIEF FINANCE  
AND HR OFFICER

# TRAINING HUB

The Tapscott Training Hub is here for our community of children and staff across the Trust and also for the external partners that we work with both within our borough and wider afield.

We strive to support and develop our workforce, equipping them with the necessary knowledge and skills to provide a high-quality education for all our children. We believe in continual reflection of current practice, as well as reviewing research and adapting our approach to being key principles built into each programme.



Additional ECT support through dedicated TTLT sessions

### Further Development of Teaching and Learning Programme

School Improvement Services and Developing Coaching for Effective Teaching and Learning

### Programmes offered:

#### Access to various network groups

A dedicated learning walk programme ranging across the year and for various subjects

#### Level 1 and 2 Team Teach Behaviour De-escalation training

Apprenticeship Teacher Training

#### Level 1 and 2 Autism Education Trust Training

Dedicated EAL/Multilingualism Support

#### Access to our R.E Hub

Cover Supervisor Development Programme

#### Minibus Driver Training

## National Professional Qualifications (NPQs)



**36%** Internal | **64%** External



Our ECTs have been very successful this year and we had 6 completing their two year induction. We now have a new group of ECTs to take on their 2 year induction for 2025-2027. We also continue to deliver the NPQs for leading Teaching and SEND as well as support the wider work on ECT delivery of conferences and clinics across three boroughs. This year the Training Hub was successfully quality assured on our delivery and facilitation of programmes.

*A video of your NPQ clinic was used for moderation with Ambition this week and they said that yours was role model facilitation - really top class!*

*Excellent overall, with some aspects being at mastery/expert level - such as:*

- The way you expertly dealt with the breakout rooms - including participant assessment for learning and feedback;*
- Expertly facilitating the 'We Do' section with probing, well-prepared questions; and*
- Also creating a really excellent, professional culture/ethos for learning at the start of the clinic.*

### School Improvement Work

Our successful partnership over the last few years supporting the Sigma Trust in various aspects of school improvement continues to develop. This year we have supported teaching and learning by delivering 12 Further Development of Teaching sessions to a group of staff, as well as delivering our CPD credited Cover Supervisor training. The partnership will continue for 2025-26 as we look to develop teaching and learning within a Sigma school.

**Daniel Mansfield**

DIRECTOR TRAINING HUB



# Be the best you can be

## HIGHLIGHTS

- Appearing on BBC1's The One Show
- Reaccreditation of IQM Flagship Status, for the 7th year running
- Pupils took part in the London Mini Marathon
- Our very own Mr. Jordan ran the London Marathon on behalf of the Trust
- Children performed in the Festival of Voices at the Hackney Empire
- Hosting colleagues from The Netherlands, New Zealand, Jersey and from schools around the UK, demonstrating best practice in action
- Ofsted Good in all areas and Outstanding in behaviour and attitudes
- The school meets and exceeds the national average at the end of Year 6 tests

## AWARDS & ACHIEVEMENTS

|  |  |   |   |
|--|--|---|---|
|  School Games Platinum |  Healthy Schools Bronze |  Primary Geography Quality Mark Gold |  Rights Respecting School Bronze |
|  IQM Flagship Status   |  Youth Sport Trust Gold |  RE Quality Mark Gold                |   |

## OUR WELL SCHOOLS PROGRAMME

- Mental and physical healthiness are part of our Roots of Ranelagh programme
- Basketball-Maths
- Adverb-Rugby
- For those children who find learning tricky, the environment is changed to support their style including Football Focus where children learn Maths and English whilst kicking a ball and scoring goals

## TTLT WRAP AROUND CARE

- Breakfast Club 7:30-8:40 am
- Napier Lodge Extended School 3-6pm
- Wrap around care: at Napier Lodge 7.30am - 6pm
- 49 after school clubs

**95%** of children say they feel safe at school

**95%** of parents say their child is happy



SCAN HERE to watch us on the One Show



Ranelagh Primary School, Corporation Street, Stratford, London, E15 3DN

Executive Head Teacher  
**Shella Lawrenson**  
Head of School  
**Leigh Welburn**

**Ofsted** Good Provider  
"Ranelagh is welcoming and highly inclusive, with children who love coming to school."



# PUPIL PARLIAMENT AND PUPIL VOICE

Our Pupil Parliament is made up of elected individual school council members from each of our four schools, with an elected Chair and Vice Chair who set the agendas and lead meetings. This group of pupils come together regularly to ensure that all children's voices are heard and meet with trustees to discuss their work and answer any questions.



## THE AIMS OF THE PUPIL PARLIAMENT

- ✓ To continue to promote Children's Rights
- ✓ To raise money for our chosen charity
- ✓ To help our schools by becoming eco-friendly and saving energy
- ✓ To work to become responsible citizens of the UK
- ✓ To improve teamwork, communications and our speaking skills



## HIGHLIGHTS FROM OUR YEAR

- ✓ Took part in filming the annual TTLT awards with Mr. Harris
- ✓ Fundraising for our chosen charity Cancer Research UK
- ✓ Attended termly board meetings and working with our trustees
- ✓ Our Saving Energy project
- ✓ A visit to City Hall
- ✓ Fundraising for Children in Need and Red Nose Day
- ✓ Working together as a team across the trust



**95%** of parents believe that there is an excellent school/parent relationship

**92%** of parents would recommend the school





**GIVE US YOUR VIEWS,  
WE LOOK FORWARD TO  
HEARING FROM YOU...**  
Email [info@ttl.academy](mailto:info@ttl.academy)  
Call 020 3108 0326  
Visit [www.ttl.academy](http://www.ttl.academy)

- @TrustTapscott
- The Tapscott Learning Trust
- Tapscott Learning Trust
- tapscott\_trust



**The Tapscott Learning Trust**  
*Working together,  
achieving for all*

